

GE Advanced Cooling Solution

Moving beyond “tight chemical control”

Description and Use

The GE Advanced Cooling Solution is a package of products from the GE Water & Process Technologies portfolio that combines to deliver:

- Greater system predictability
- Lower TCO
- Reduced effluent and environmental pressures

GenGard* chemistry with the TrueSense* Online for Cooling monitor combined with an innovative communication package, form the basis for the GE Advanced Cooling Solution.

Typical Applications

The GE Advanced Cooling Solution is designed for use on open recirculating cooling systems in all industries. These include: refining, chemical processing, food and beverage, power, steel, mining and mineral processing, automotive and commercial and industrial.

General Properties

The GE Advanced Cooling Solution is a series of packaged technologies designed to deliver outstanding results to all cooling customers. The complete list of specific solutions and drawings can be found on page 2.

Packaging Information

Your GE account manager can help you select the solution that is right for your operation.

Safety Precautions

Please follow all safe working practices for 110V electrical connections and maintenance.

Installation Requirements

The GE Advanced Cooling Solution is shipped as pre-fabricated, panel-mounted units for easy installation. Electrical and water requirements include:

- **Required voltage:** 110 VAC, 1ph, 10 amp required
- **Inlet/Outlet Connections:** ¾" NPT with isolation valves
- **Minimum Pressure:** 20 – 50 psi
- **Pump Power Receptacles:** 4
- **Flow Switch:** Thermal
- **Included Sensors:** pH, Conductivity, ORP
- **Chemical injection points:** 2
- **Dimensions:** 66" H X 68" W X 20" D



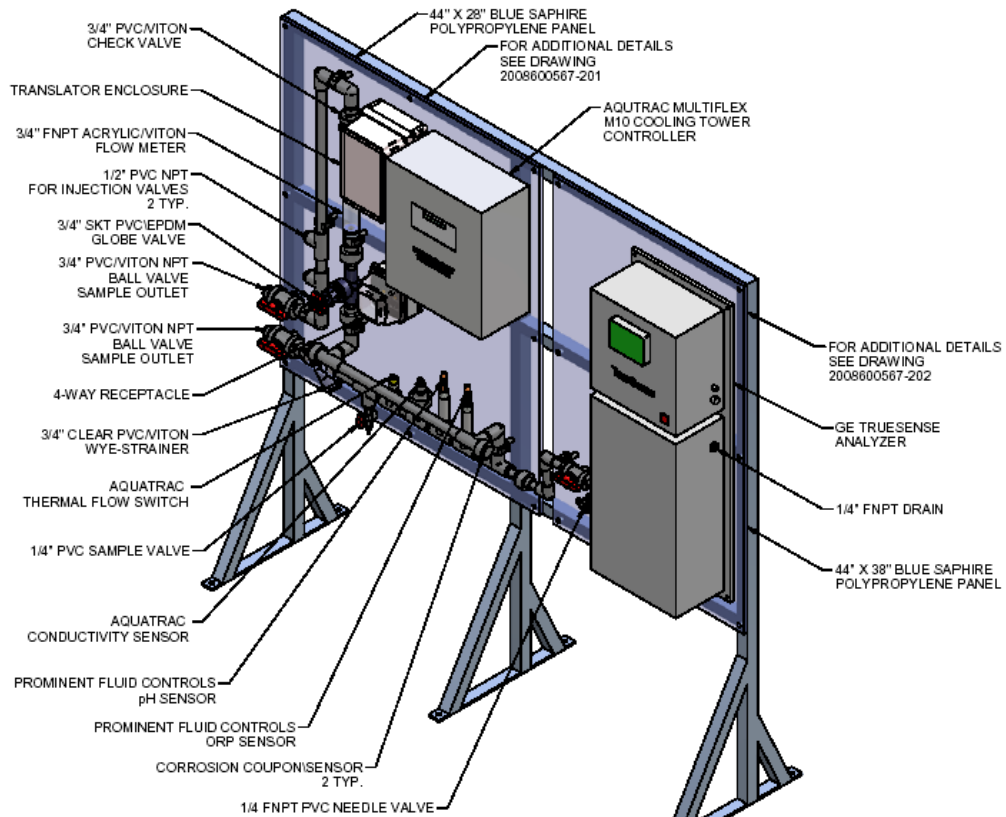
Find a contact near you by visiting www.ge.com/water and clicking on “Contact Us”.

* Trademark of General Electric Company; may be registered in one or more countries.

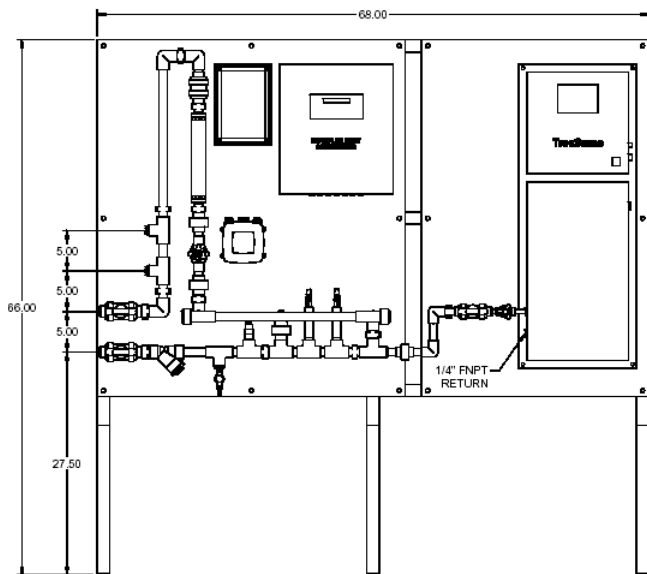
©2009, General Electric Company. All rights reserved.

Ordering Information

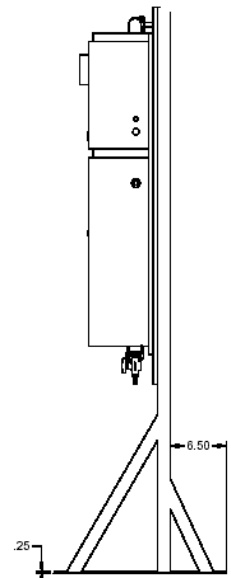
Please contact Application Engineering for product Selection.



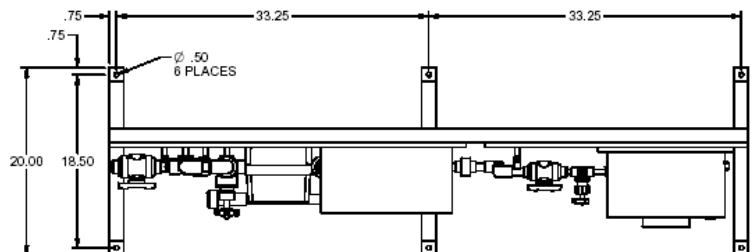
ISOMETRIC VIEW



FRONT VIEW



SIDE VIEW



PLAN VIEW