

GE Series



Industrial Ultrafiltration Elements – TFM* 1,000 MWCO

The G-Series GE family of proprietary thin-film ultrafiltration membrane elements is characterized by a molecular weight cutoff of 1,000 on polyethylene glycol and a smooth, fouling resistant membrane surface.

GE Elements are used for surface water pretreatment, color/TOC reduction, and chemical purification.

Table 1: Element Specification

Membrane	G-Series, Thin-Film Membrane (TFM*)	
Model	Average permeate flow gpd (m ³ /day) ¹	MWCO (Dalton)
GE2540F1072	740 (2.8)	1,000
GE2540F1073	500 (1.9)	1,000
GE4040C1025	2,000 (7.6)	1,000
GE4040F1020, Stinger	2,600 (9.8)	1,000
GE8040F1002	7,300 (27.6)	1,000

¹ Flux specifications are based on fouling free water at 410psi operating pressure (2,827kPa), 77°F (25°C), and 10% recovery. Individual element flux may vary ± 25%.

Model	Spacer mil (mm)	Active area ft ² (m ²)	Outer wrap	Part number
GE2540F1072	30 (0.76)	27 (2.5)	Fiberglass	1207086
GE2540F1073	50 (1.27)	18 (1.7)	Fiberglass	1207087
GE4040C1025	50 (1.27)	70 (6.5)	Cage	1207091
GE4040F1020, Stinger	30 (0.76)	91 (8.5)	Fiberglass	3050063
GE8040F1002	50 (1.27)	260 (24.2)	Fiberglass	1207096

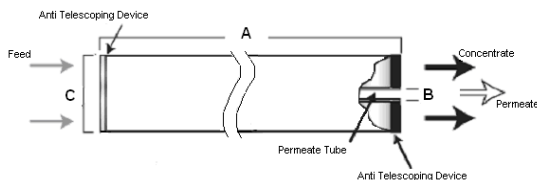


Figure 1: Element Dimensions Diagram – Female

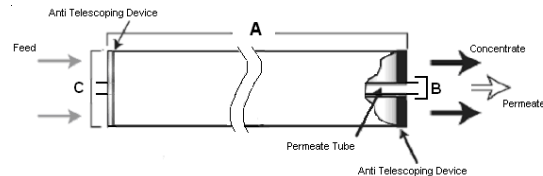


Figure 2: Element Dimensions Diagram – Male, Stinger

Table 2: Dimensions and Weight

Model ¹	Dimensions, inches (cm)			Boxed Weight lbs (kg)
	A	B ²	C ³	
GE2540F1072	40.0 (101.6)	0.75 1.90 (OD)	2.4 (6.1)	4 (1.8)
GE2540F1073	40.0 (101.6)	0.75 1.90 (OD)	2.4 (6.1)	4 (1.8)
GE4040C1025	40.0 (101.6)	0.625 (1.59)	3.9 (9.9)	9 (4.1)
GE4040F1020, Stinger	40.0 (101.6)	0.75 (1.9)	3.9 (9.9)	9 (4.1)
GE8040F1002	40.0 (101.6)	1.125 (2.86)	7.9 (20.1)	29 (13.2)

¹ These elements are dried and bagged before shipping.

² Internal diameter unless specified OD (outside diameter).

³ The element diameter (dimension C) is designed for optimum performance in GE pressure vessels. Other pressure vessel dimension and tolerance may result in excessive bypass and loss of capacity.

Table 3: Operating and CIP parameters

Typical Operating Flux	5-20 GFD (8-34 LMH)
Maximum Operating Pressure	400psi (2,760kPa)
Maximum Temperature	Continuous Operation: 122°F (50°C) Clean-In-Place (CIP): 122°F (50°C)
pH Range	Continuous Operation: 2.0-10.0 Clean-In-Place (CIP): 1.0-11.5
Maximum Pressure Drop	Over an element: 15psi (103kPa) Per housing: 60psi (414kPa)
Chlorine Tolerance	20-50ppm days

a product of
ecomaginationSM



Find a contact near you by visiting www.ge.com/water and clicking on "Contact Us".

* Trademark of General Electric Company; may be registered in one or more countries.

©2010, General Electric Company. All rights reserved.