

JX Series

Industrial Stream Clarification MF Element

The J-Series family of microfiltration membrane elements is used for process stream clarification including suspended solids removal.

The J-Series membrane is manufactured with a pore-size of 0.3 micron.

Table 1: Element Specification

Membrane	J-Series, Polyvinylidene Fluoride
----------	-----------------------------------

Model	Spacer mil (mm)	Active mrea ft ² (m ²)	Outer wrap	Part number
JX2540F1074	50 (1.27)	19 (1.8)	Fiberglass	1207252
JX4040C1302	30 (0.76)	73 (6.8)	Cage	1207264
JX4040F1052, Stinger	30 (0.76)	91 (8.5)	Fiberglass	3049975
JX4040F1116, Stinger	50 (1.27)	62 (5.8)	Fiberglass	3049974
JX8040F1458	30 (0.76)	366 (34.0)	Fiberglass	1207283

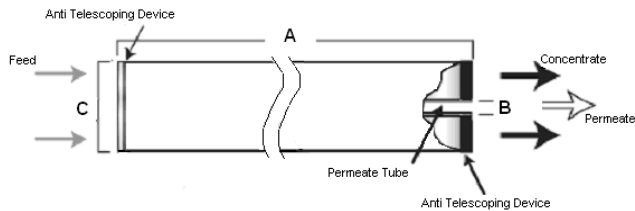


Figure 1: Element Dimensions Diagram - Female

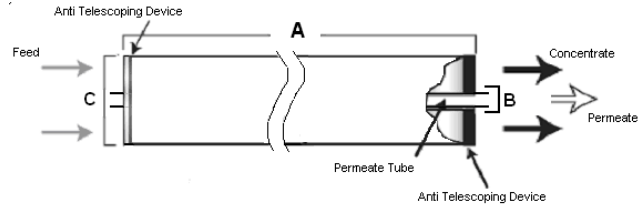


Figure 2: Element Dimensions Diagram - Male, Stinger

Table 2: Dimensions and Weight

Model ¹	Dimensions, inches (cm)			Boxed Weight lbs (kg)
	A	B ²	C ³	
JX2540F1074	40.0 (101.6)	0.75 (1.9) OD	2.4 (6.1)	4 (1.8)
JX4040C1302	40.0 (101.6)	0.625 (1.59)	3.9 (9.9)	9 (4.1)
JX4040F1052, Stinger	40.0 (101.6)	0.75 (1.9) OD	3.9 (9.9)	9 (4.1)
JX4040F1116, Stinger	40.0 (101.6)	0.75 (1.9) OD	3.9 (9.9)	9 (4.1)
JX8040F1458	40.0 (101.6)	1.125 (2.86)	7.9 (20.0)	29 (13.2)

¹ These elements are bagged dry before shipping.

² Internal diameter unless specified OD (outside diameter).

³ The element diameter (dimension C) is designed for optimum performance in GE pressure vessels. Other pressure vessel dimension and tolerance may result in excessive bypass and loss of capacity.

Table 3: Operating and CIP parameters

Typical Operating Flux	5-20 GFD (8-34 LMH)
Maximum Operating Pressure	100psi (700kPa)
Maximum Temperature	Continuous Operation: 122°F (50°C) Clean-In-Place (CIP): 122°F (50°C)
pH Range	Continuous Operation: 2.0-10.0 Clean-In-Place (CIP): 1.0-11.5
Maxime Pressure Drop	Over an element: 15psi (103kPa) Per housing: 60psi (414kPa)
Chlorine Tolerance	5,000+ ppm-days

a product of
ecomaginationSM



Find a contact near you by visiting www.ge.com/water and clicking on "Contact Us".

* Trademark of General Electric Company; may be registered in one or more countries.

©2011, General Electric Company. All rights reserved.