

AD Series

Seawater Desalination RO Elements



The A-Series, family of proprietary thin-film reverse osmosis membrane elements are characterized by a good sodium chloride rejection.

AD Seawater Elements feature high-pressure construction, a fiberglass outer wrap and standard feed spacers.

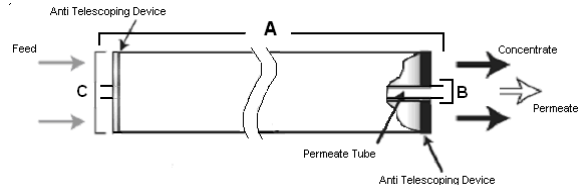


Figure 2: Element Dimensions Diagram – Male

Table 1: Element Specification

Membrane	A-Series, Thin-Film Membrane (TFM*)		
Model	Average permeate flow gpd (m3/day) ^{1,2}	Average NaCl rejection ^{1,2}	Minimum NaCl rejection ^{1,2}
AD2540FM	410 (1.5)	99.6 %	99.2 %
AD4040FM	1,100 (4.2)	99.6 %	99.2 %
AD8040F	5,600 (21.2)	99.6 %	99.2 %

¹ Average salt rejection after 24 hours operation. Individual flow rate may vary +25%/-25%.

² Testing conditions: 32,000mg/l NaCl solution at 800psi (5,516kPa) operating pressure, 77 °F, pH 7.5 and 7% recovery.

Table 2: Dimensions and Weight

Model ¹	Dimensions, inches (cm)			Boxed Weight lbs (kg)
	A	B ²	C	
AD2540FM	40.0 (101.6)	0.75 (1.90 OD)	2.4 (6.1)	6.6 (3.0)
AD4040FM	40.0 (101.6)	0.75 (1.90 OD)	3.9 (9.9)	9 (4)
AD8040F	40.0 (101.6)	1.125 (2.86)	7.9 (20.1)	35 (16)

¹ These elements are bagged wet before shipping.

² Internal diameter unless specified OD (outside diameter).

Model	Active area ft ² (m ²)	Outer wrap	Part number
AD2540FM	26 (2.4)	Fiberglass	1223377
AD4040FM	86 (8.0)	Fiberglass	1223378
AD8040F	370 (34.4)	Fiberglass	1223381

Table 3: Operating and CIP parameters

Typical Operating Pressure	800psi (5,516 kPa)
Typical Operating Flux	7-11GFD (12-19LMH)
Maximum Operating Pressure	1,200psi (8,268 kPa)
Maximum Temperature	Continuous operation: 122°F (50°C) Clean-In-Place (CIP): 122°F (50°C)
pH Range	Optimum rejection: 7.0 - 7.5 Continuous operation: 4.0 - 11.0 Clean-In-Place (CIP): 2.0 - 11.5
Maximum Pressure Drop	Over an element: 12 psi (83 kPa) Per housing: 50 psi (345 kPa)
Chlorine Tolerance	1,000+ ppm-hours Dechlorination recommended
Feedwater	NTU < 1 SDI < 5

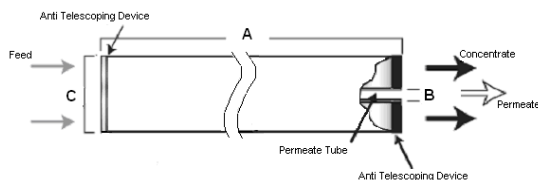


Figure 1: Element Dimensions Diagram – Female

a product of
ecomaginationSM



Find a contact near you by visiting www.ge.com/water and clicking on "Contact Us".

* Trademark of General Electric Company; may be registered in one or more countries.

©2009, General Electric Company. All rights reserved.