

# EW Series

## Microfiltration – Pretreatment for RO/NF

The E-Series family consists of 0.04 µm microfiltration elements utilizing polysulfone membrane.

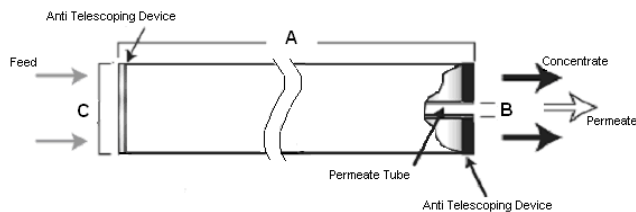
The EW family of elements should be selected when pretreatment is in need to keep a reverse osmosis or a nanofiltration system running. EW will remove suspended solids and other known foulants.

The EW family of elements should be selected for process stream clarification including suspended solids removal.

**Table 1: Element Specification**

Membrane	E-Series, Polysulfone
----------	-----------------------

Model	Active area ft <sup>2</sup> (m <sup>2</sup> )	Outer wrap	Part number
EW4025T	60 (5.6)	Tape	1207063
EW4026F	60 (5.6)	Fiberglass	1207065
EW4040F	85 (7.9)	Fiberglass	1207071
EW4040T	85 (7.9)	Tape	1207074
EW8040F	370 (34.4)	Fiberglass	1207077



**Figure 1: Element Dimensions Diagram - Female**

**Table 2: Dimensions and Weight**

Model <sup>1</sup>	Dimensions, inches (cm)			Boxed Weight lbs (kg)
	A	B <sup>2</sup>	C <sup>3</sup>	
EW4025T	25.0 (63.5)	0.625 (1.59)	3.9 (9.9)	5 (2.3)
EW4026F	26.0 (66.7)	0.625 (1.59)	3.9 (9.9)	5 (2.3)
EW4040F	40.0 (101.6)	0.625 (1.59)	3.9 (9.9)	8 (3.5)
EW4040T	40.0 (101.6)	0.625 (1.59)	3.9 (9.9)	8 (3.5)
EW8040F	40.0 (101.6)	1.125 (2.86)	7.9 (20.1)	32 (14.5)

<sup>1</sup>These elements are bagged dry before shipping.

<sup>2</sup>Internal diameter unless specified OD (outside diameter).

<sup>3</sup>The element diameter (dimension C) is designed for optimum performance in GE Water & Process Technologies pressure vessels. Other pressure vessel dimension and tolerance may result in excessive bypass and loss of capacity

**Table 3: Operating and CIP parameters**

Typical Operating Pressure	30 - 150 psi (207 - 1,034 kPa)
Typical Operating Flux	10 - 30GFD (15-50LMH)
Maximum Operating Pressure	200 psi (1,379 kPa)
Maximum Temperature	Continuous operation: 122°F (50°C) Clean-In-Place (CIP): 122°F (50°C)
pH Range	Continuous operation: 4-11.0, Clean-In-Place (CIP): 2.0-11.5
Maximum Pressure Drop	Over an element: 12 psi (83 kPa) Per housing: 50 psi (345 kPa)
Chlorine Tolerance	5,000+ ppm-days

a product of  
**ecomagination™**



Find a contact near you by  
visiting [ge.com/water](http://ge.com/water) or  
e-mailing [custhelp@ge.com](mailto:custhelp@ge.com).

**Global Headquarters**  
Trevose, PA  
+1-215-355-3300

**Americas**  
Watertown, MA  
+1-617-926-2500

**Europe/Middle East/Africa**  
Heverlee, Belgium  
+32-16-40-20-00

**Asia/Pacific**  
Shanghai, China  
+86 (0) 411-8366-6489

©2008, General Electric Company. All rights reserved.

\*Trademark of General Electric Company; may be registered in one or more countries.

FS1272EN Apr-08