

Winflows 3.0

Installation Guide

Version 1.0

Published: July 2010



Find a contact near you by visiting www.ge.com/water and clicking on "Contact Us".
* Trademark of General Electric Company; may be registered in one or more countries.
©2010, General Electric Company. All rights reserved.

1.0 Introduction to Winflows 3.0

Winflows is a tool for designing and simulating the operation of reverse osmosis (RO) systems. The current Winflows version developed by GE has a few new key features including:

- 3 pass systems
- Permeate Split and Recycle
- Antiscalant Dosing
- Energy Recovery Devices
- Ability to combine Stages

The user is assumed to possess basic knowledge of reverse osmosis system design principles and know the required performance of the system under consideration. This tool is user friendly, highly reliable, robust and intuitive in designing of reverse osmosis system as compared to other competitive tools. The version provides exposure to GE's RO membranes and GE's extensive cartridge filter product line.

2.0 What you need to install Winflows

Your computer must have one of the following supported operating systems:

- Windows 98
- Windows 98 Second Edition
- Windows ME
- Windows 2000 Service Pack 3
- Windows Server 2003
- Windows XP Service Pack 2
- Windows Vista
- Windows 7

Your computer must have the required software:

- Windows Installer 3.0 (except for Windows 98/ME which will require Windows Installer 2.0 or later)
- IE 5.01 or later: Your computer must also be running Microsoft Internet Explorer 5.01 or later for all installations for the .NET Framework.

Disk Space Requirements:

- 280 MB
- 610MB (for .NET Framework runtime)

Required disk space to download the Winflows program

- 100 MB

Display Resolution:

- Winflows works best in a screen resolution higher than 800 x 600

3.0 Installation of Winflows Application

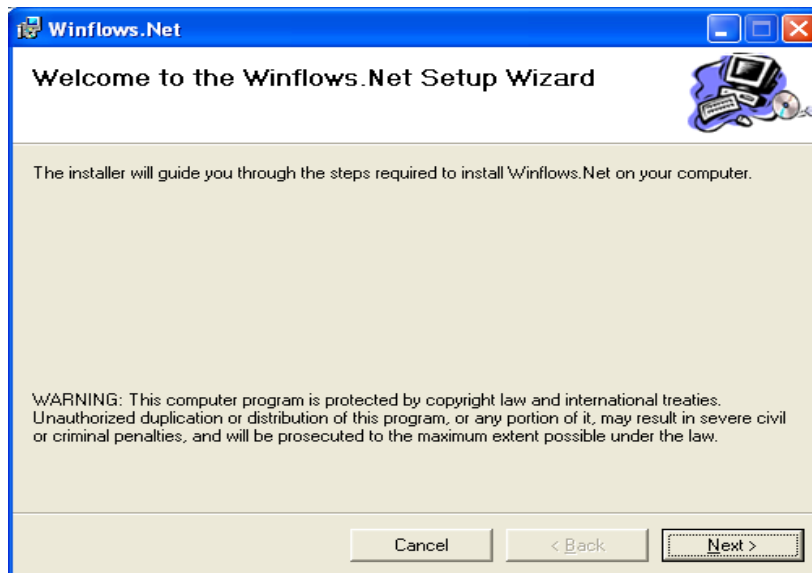
If you currently have an older version of Winflows ensure the application is closed. Next, download the setup package from www.gewater.com/winflows.jsp. The package is in a compressed zip file. Extract the zip file to a folder on the target machine (e.g. C:\WinflowsSetup\). The following files will be extracted:

- Setup.exe
- Winflow.Net.msi
- dotnetfx *[Note: this folder will only be there if you download the setup with .NET framework 2.0 runtime]*

First time users may need Administrative rights as .NET Framework runtime will be installed on the machine by the setup.

Please follow the step-by-step guide below to successfully install the Winflows program to your computer.

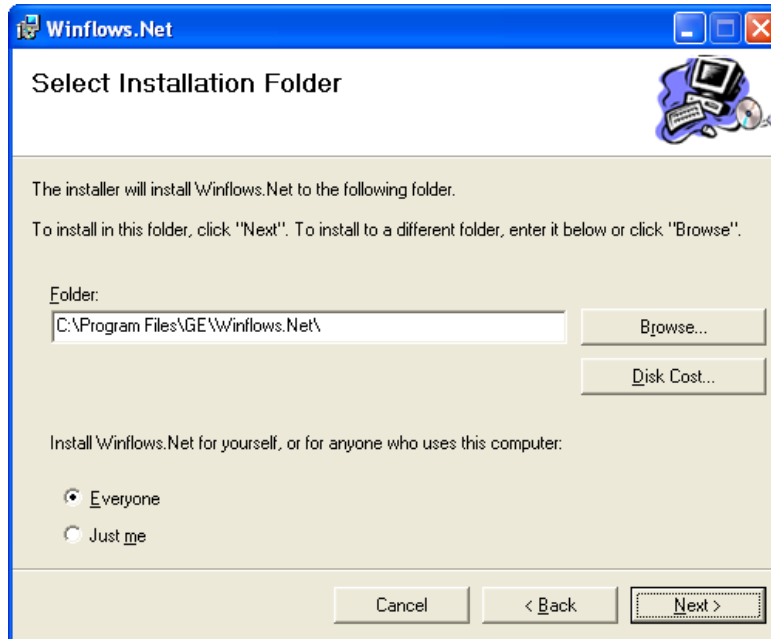
Step 1: Run setup.exe file by double clicking on it. A wizard will appear on the screen.



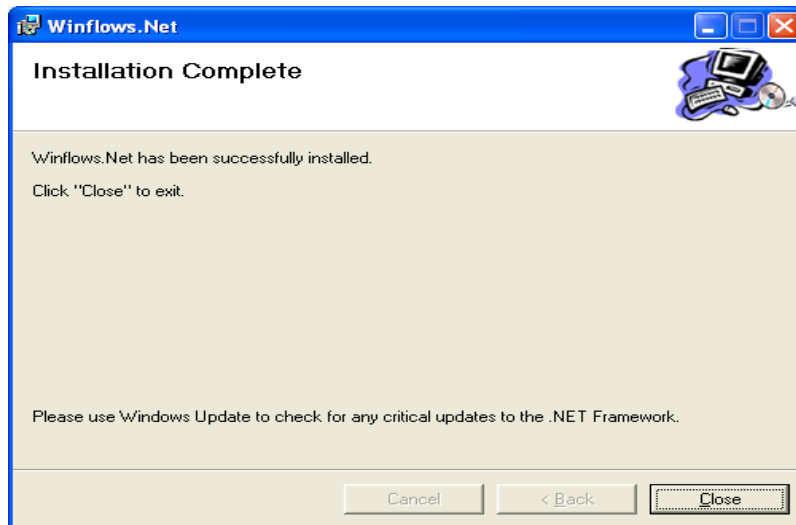
Step 2: If your system does not have .NET Framework installed on your machine the setup will automatically do so. You may need Administrative rights or the help of a system administrator in order to install Winflows.

Step 3: The wizard will now prompt you for the location where you wish to install Winflows on your machine. The default location is C:\Program files\GE\Winflows.

Step 4: If you wish to change the installation location click on the browse button and select the desired folder. Otherwise click the Next button and the setup will proceed to install Winflows.



Step 5: Once setup is done press the close button on the wizard.

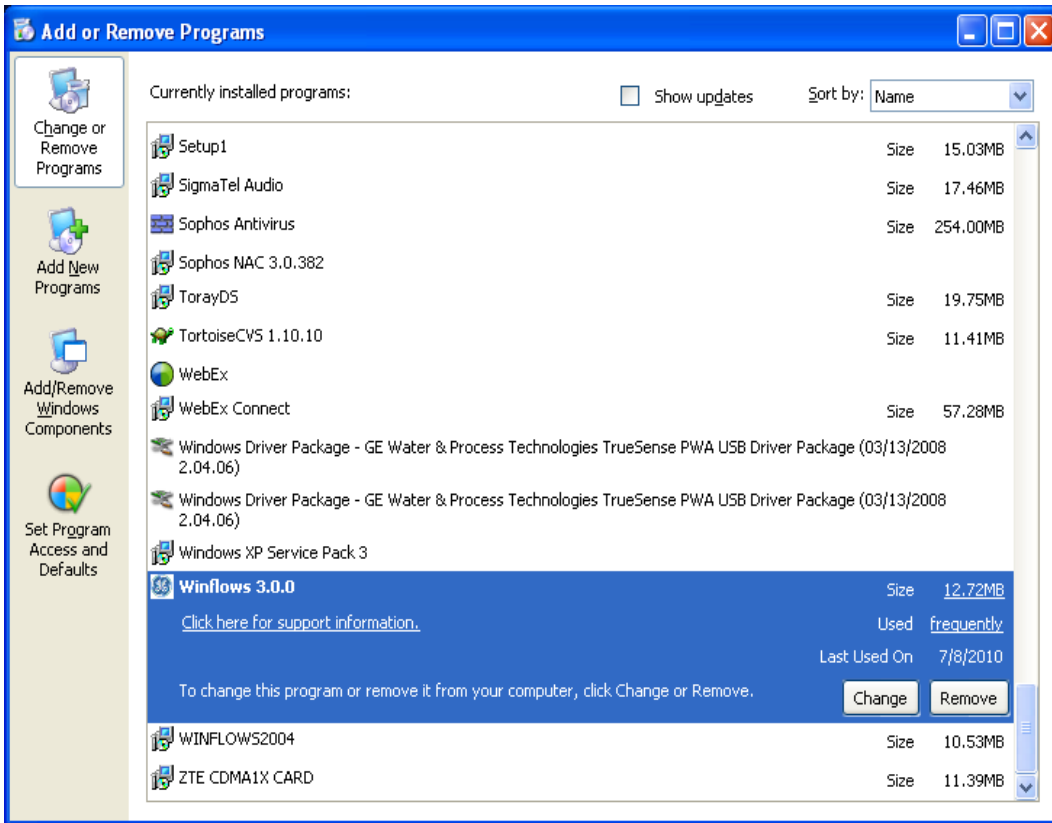


Step 6: A shortcut to Winflows is placed on the Start menu of your computer and on your desktop.

4.0 Uninstall Winflows

Winflows can be uninstalled from your machine at anytime by executing the following:

- Step 1: Click on the Start Menu
- Step 2: Select Control Panel
- Step 3: Select Add or Remove Programs
- Step 4: Select Winflows from the list of programs and then click on Remove



5.0 Disclaimer

Any projection simulated on Winflows does not represent a guarantee of performance and is provided solely as a service. The data contained herein should be used in conjunction with good engineering judgment.